

^ZIMUT

7

2

NEW FLY 72



PRELIMINARY BROCHURE

INDEX

01	THE DESIGN & LIFESTYLE ON BOARD	P004
02	FLY 72 SPEC SHEET	P029

A one-of-a-kind beauty, enrapturing,
that steals your breath away, leaving you
speechless. An extraordinary idea as the only
possible pathway, to get to where you want,
to explore, to go beyond.
The freedom of embracing the unknown, that
you know you'll love as a part of your very own
story. A thought that provokes your mind and
then inspires you to aim for the impossible,
making mistakes, yet being brave.
A magic je ne sais quoi that enchants and
intrigues you, moving you to feel more and to
sense uniqueness.

The choice to risk it all, the one that makes you
go for it, to impress yourself and all those who
are worth it.

Welcome to Azimut.

AZIMUT.
DARE TO AMAZE.



01

THE DESIGN & LIFESTYLE ON BOARD











NEW FLY 72

01 | THE DESIGN & LIFESTYLE ON BOARD





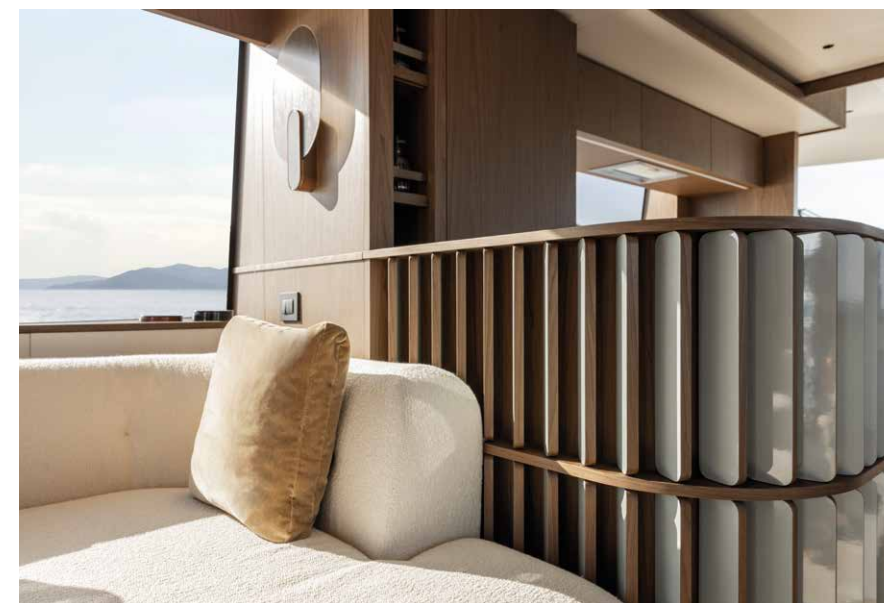
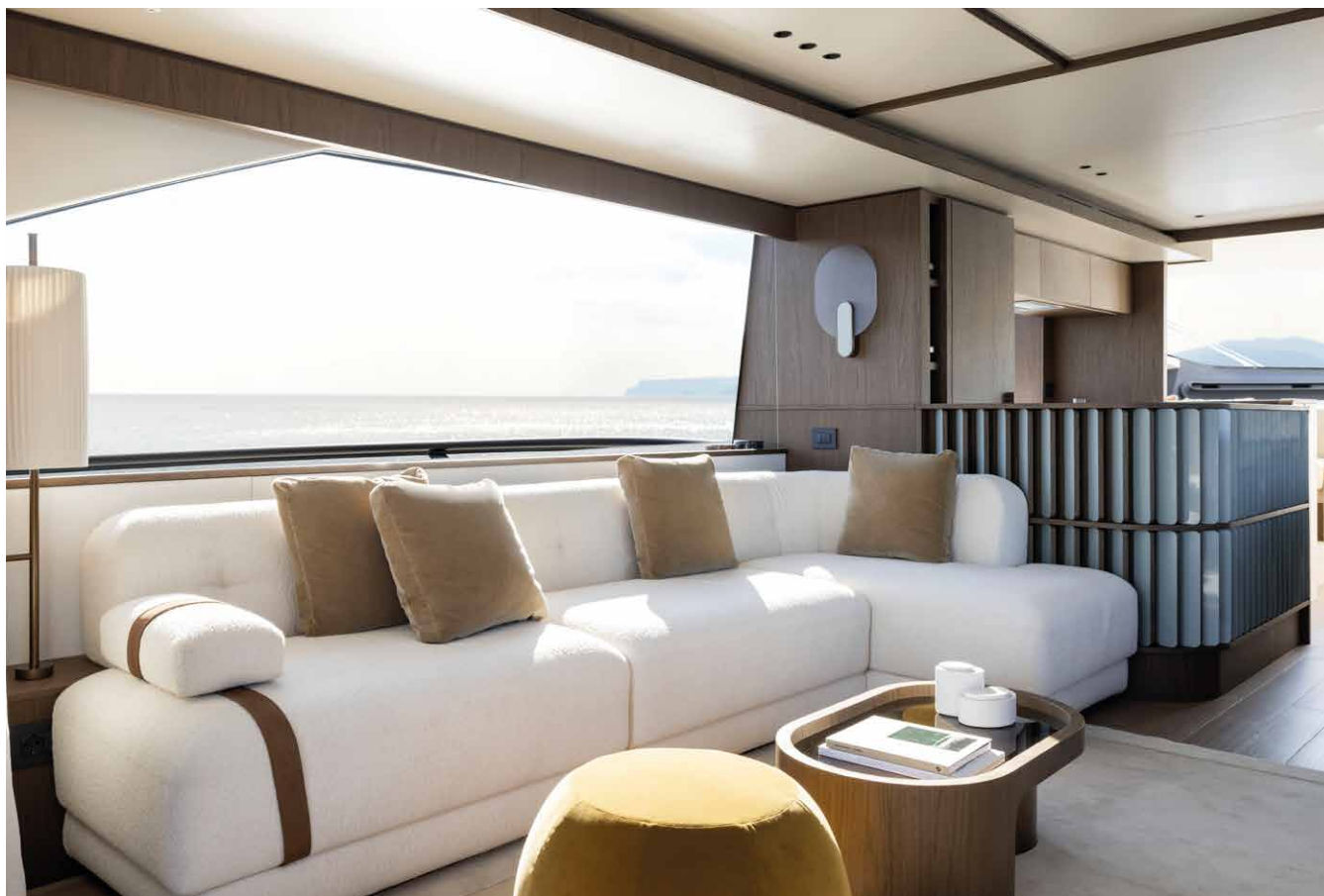


















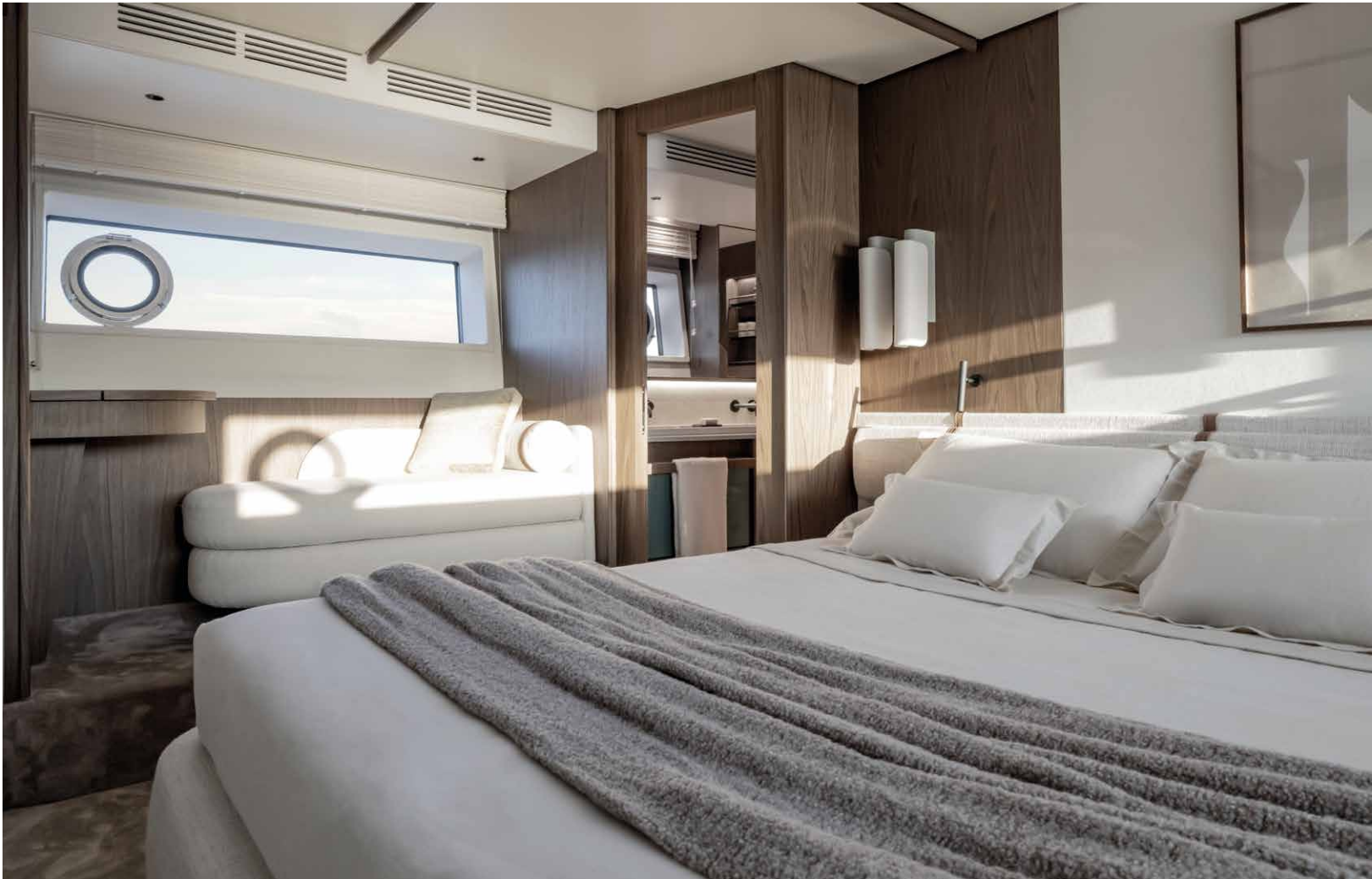


Now, let us discover the guest accommodations.

Shall we?

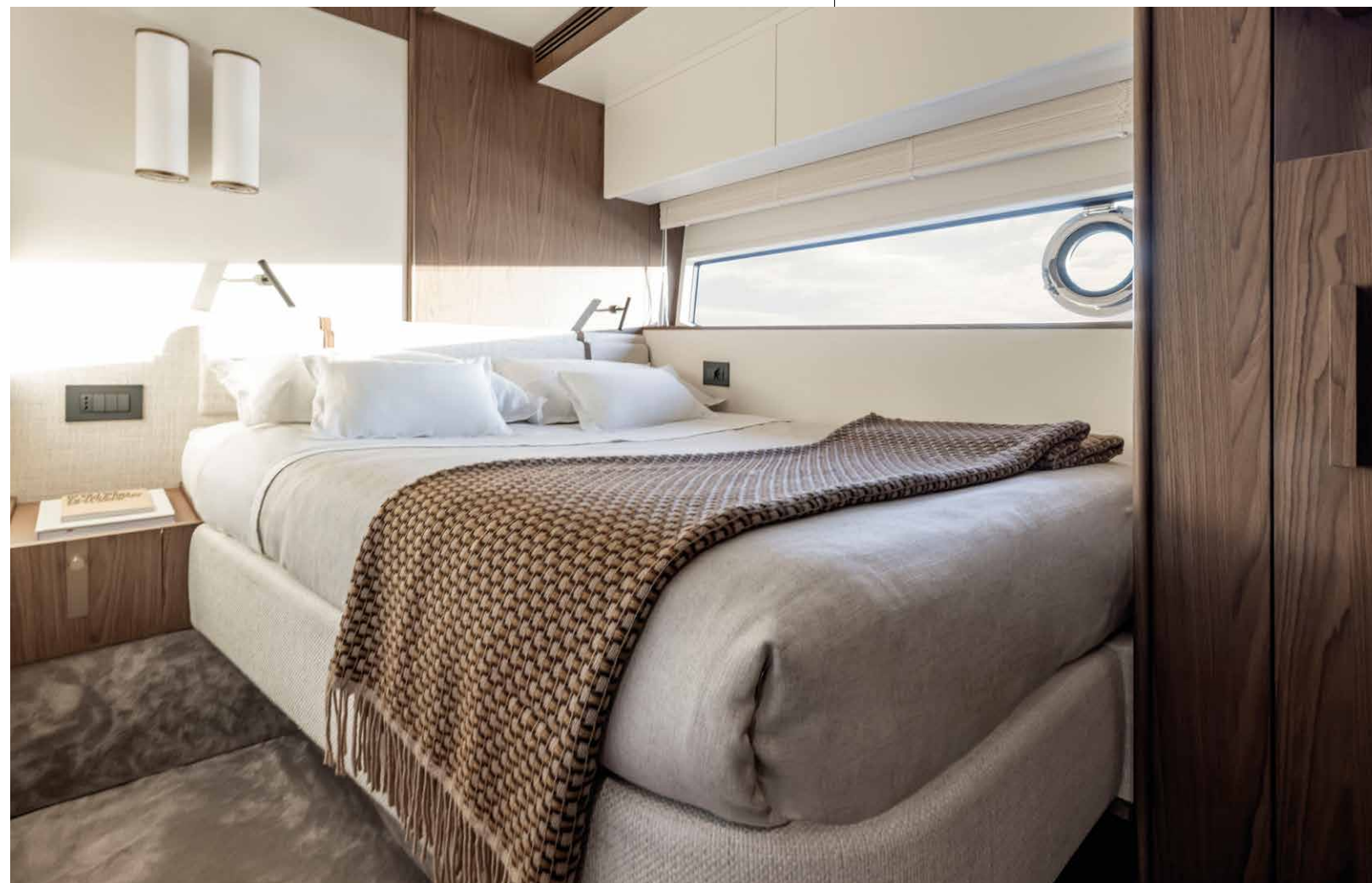


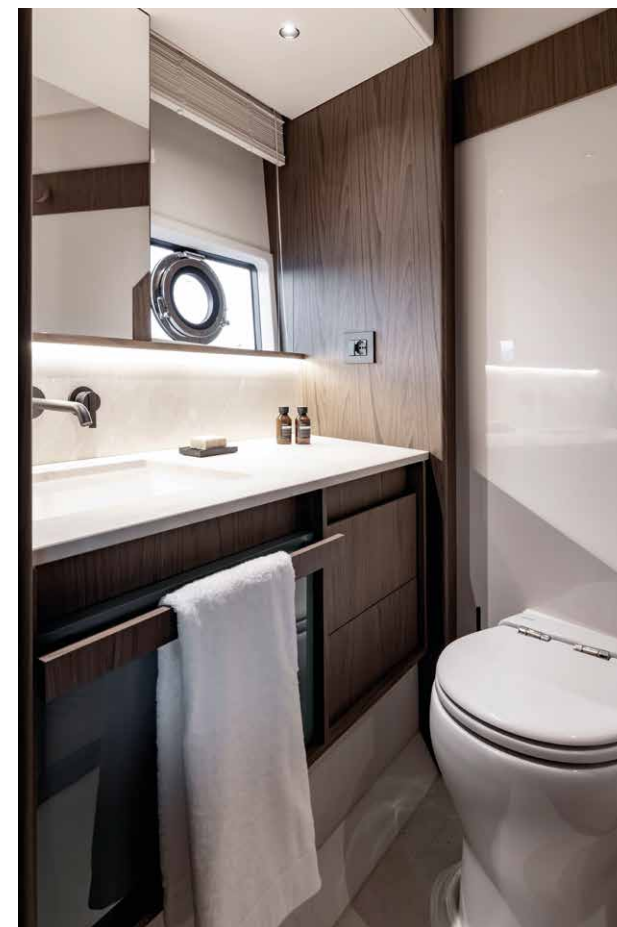
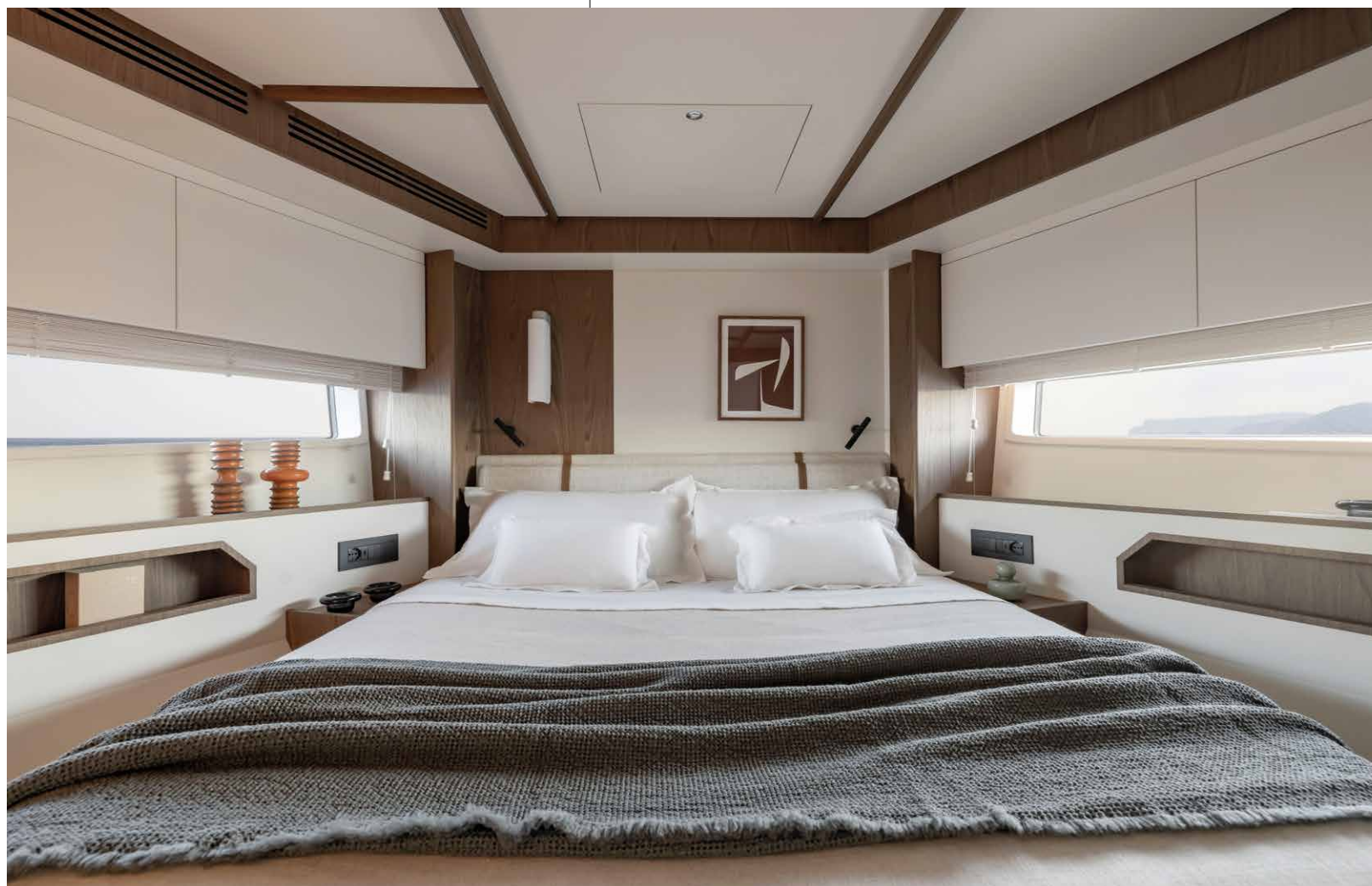
















02

FLY 72 SPEC SHEET

GENERAL CHARACTERISTICS

LENGTH OVERALL	22,57 m	74' 1"
BEAM MAX	5,62 m	18' 5"
ENGINES	2 x MAN CR V12 1400 mHP	
MAXIMUM SPEED	up to 31 kn	
CRUISING SPEED	up to 26 kn	
FUEL CAPACITY	5200 l	1373 US Gal
WATER CAPACITY	1100 l	290 US Gal
CABINS	4 + 1 crew	
BERTHS	8 + 2 crew	
HEAD COMPARTMENTS	4 + 1 crew	
BUILDING MATERIAL	Carbon fibre + VTR/GRP	
EXTERIOR DESIGNER	Alberto Mancini	
INTERIOR DESIGNER	Fabio Fantolino	
KEEL	Planing with deadrise 15° aft	
HULL	P.L. AUSONIO Naval Architecture & Azimut R&D Dept.	
BUILDER	Azimut Yachts	

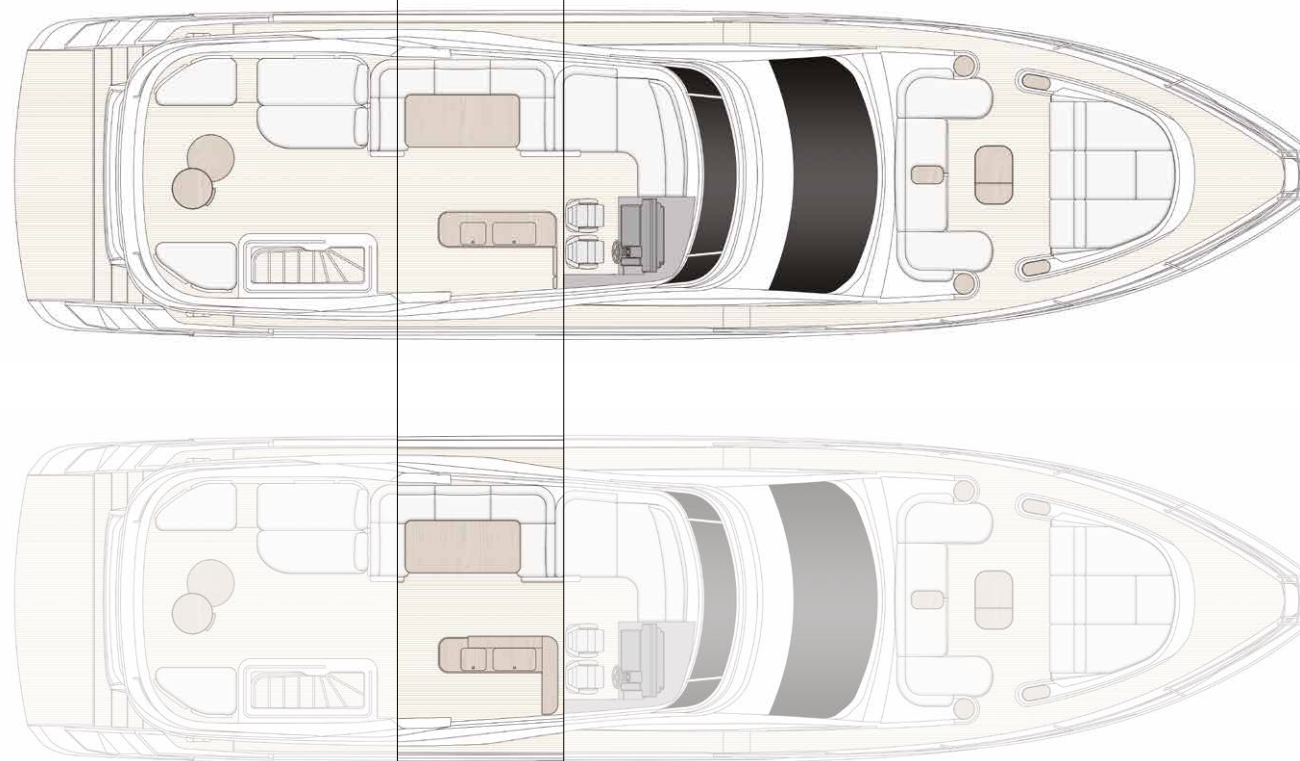
Last updated 05.2023
Please consult your dealer for the latest specifications.

UNI ISO 8666
The performance described applies to a vessel with standard configuration (standard equipment installed) and a clean hull, propellers, and rudder. It is also noted that the performance described was recorded under favourable sea and wind conditions (Beaufort scale index 1, Douglas scale index 1); different and worse sea conditions could significantly impact performance.

CE MARK
Given the continual evolution of technology, Azimut | Benetti S.p.A reserves the right to modify the technical specifications on its vessels at any time and without prior notice.

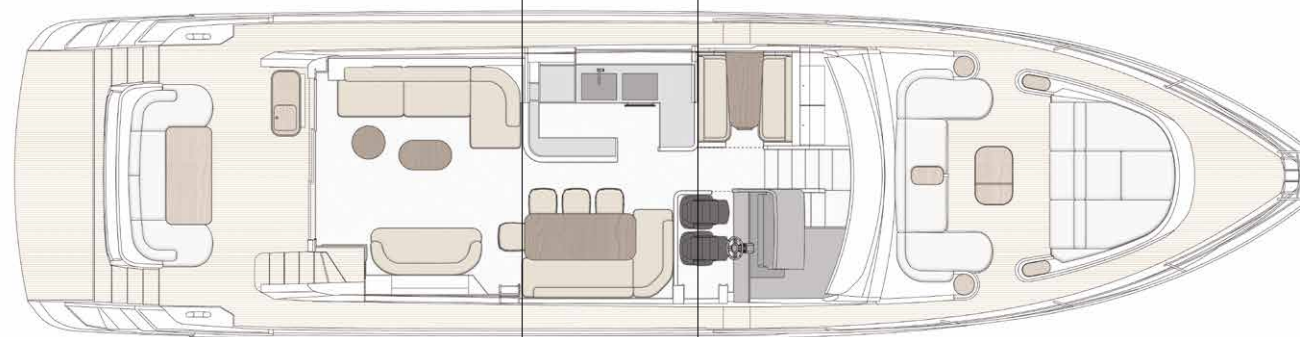
FLYBRIDGE

LIFT TV 42" OPT

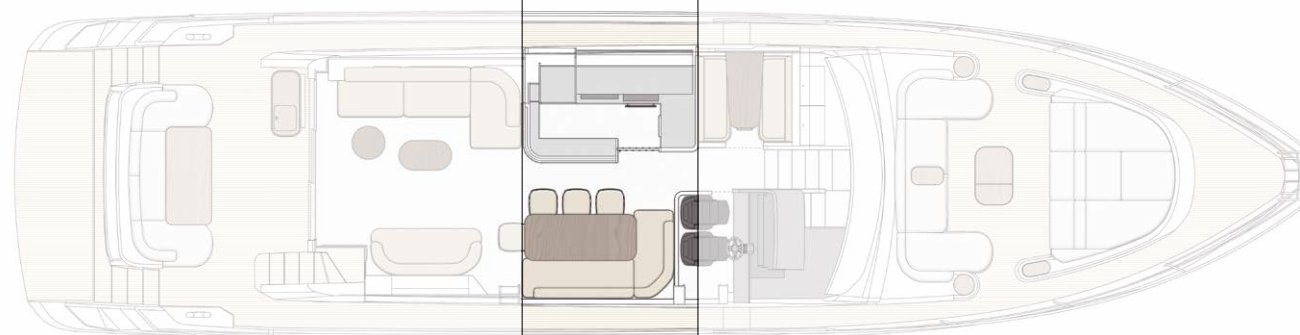


MAIN DECK

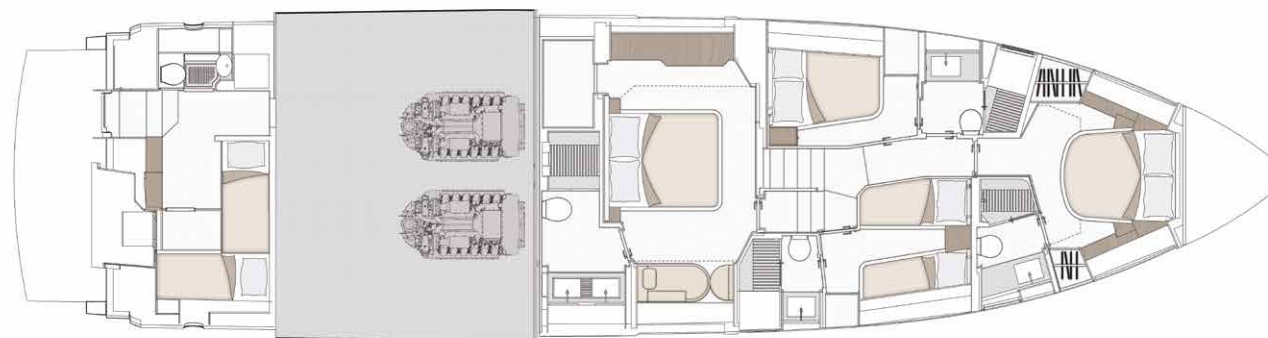
OPEN GALLEY



ENCLOSED GALLEY



LOWER DECK





PRELIMINARY BROCHURE
NEW FLY 72

RELEASE 09.23

This brochure in no way constitutes a contract of sale for the boatyard's vessels to any person or company. All information contained herein, including but not limited to technical and performance data, illustrations, and drawings, is non-binding and for purposes of illustration only. The information in this brochure refers to the boatyard's standard motoryacht models available as of the date of publication. Technical and descriptive information is valid only to the extent that it pertains to the specific vessel that is the subject of a purchase. Contract terms are valid only to the extent that they are contained in a contract of sale. This document is based on information available at the time of publication. Despite efforts to ensure the greatest possible accuracy, the information contained herein may fail to cover all details, omit technical or commercial changes that may have been made subsequent to publication, describe features that are not present, and fail to envisage all circumstances that might occur. Any illustrations, photographs, diagrams and examples shown in this brochure are included solely for the purposes of illustrating the text. Due to the different features of each vessel, the boatyard assumes no liability for actual use based on the illustrated applications.

^ZIMUT

azimutyachts.com

