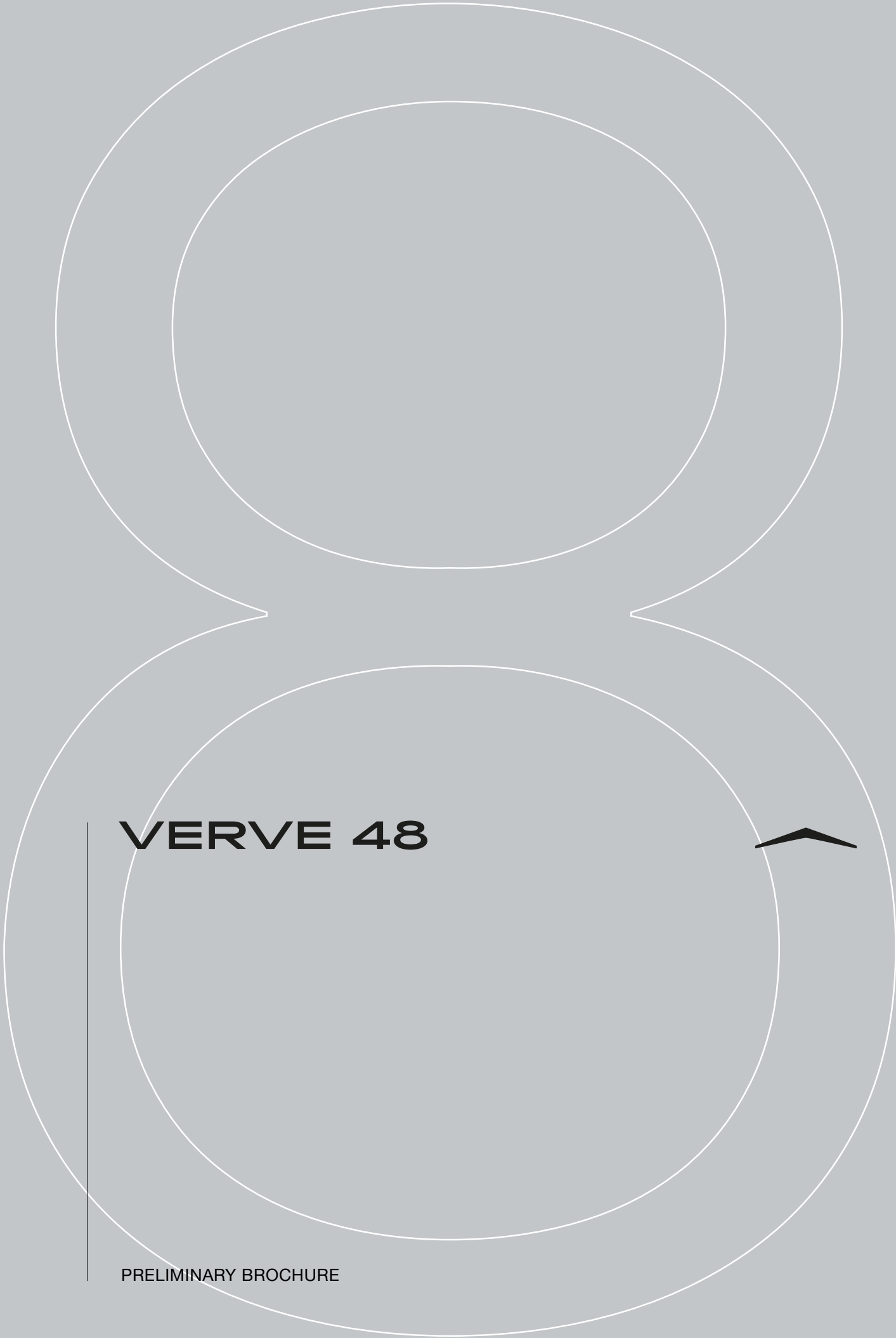


**AZIMUT**



**VERVE 48**



PRELIMINARY BROCHURE

# INDEX

01	THE DESIGN & LIFESTYLE ON BOARD	P04
02	HER MAIN TECHNICAL FEATURES	P23
03	VERVE 48 SPEC SHEET	P28



A one-of-a-kind beauty, enrapturing, that steals your breath away, leaving you speechless. An extraordinary idea as the only possible pathway, to get to where you want, to explore, to go beyond.

The freedom of embracing the unknown, that you know you'll love as a part of your very own story. A thought that provokes your mind and then inspires you to aim for the impossible, making mistakes, yet being brave.


A magic je ne sais quoi that enchants and intrigues you, moving you to feel more and to sense uniqueness.

The choice to risk it all, the one that makes you go for it, to impress yourself and all those who are worth it.

Welcome to Azimut.

AZIMUT.  
DARE TO AMAZE.





01

# THE DESIGN & LIFESTYLE ON BOARD



# THE PURSUIT OF ADRENALINE

A phenomenon of performance and the sea born of immersive DNA, the Verve 48 favors the most authentic emotions and superior comfort. With the power to travel over the water up to 50 knots, this single sensational yacht with outboard motors unites speed and agility, becoming the optimal choice for those who love fluid and frequent movements, and want to feel at one with the sea. A statement of powerful design, this vessel full of character represents pure innovation: welcome weekender.

Push further with the Verve 48.









Welcome aboard, ladies and gentlemen.

Let us begin the tour.







[ Dark fashion plates almost merge with the windows, reborn to enhance lightness. ]

The American approach of wholeheartedly embracing the sporty nature of life at sea combines with renowned Italian style and design flair, and the unmistakable Azimut personality and attention to detail. The bow reinterprets the typical profile of offshore racing boats, but the innovative integration of the windows into the hull and bulwarks creates an extraordinary sense of connection with the sea.







# DESTINED TO TURN HEADS



The asymmetrical split-level layout of the bow is designed to maximize comfort and keep contact with the sea. Up top is an ample cushioned sunbathing area while just below is a versatile al fresco lounge & dining zone with a six-person table embraced by an inviting C-shaped sofa.



# VERSATILITY AND CONVIVIALITY







The concept behind the design of the exterior areas is to enable the owner and guests to fully enjoy the extraordinary privilege of life on the water. Versatility is to the fore, with a high-low table that can be completely removed from sight, a greatly expanded fold-down sidewall that extends the deck and a new fully walk around outdoor kitchen.



# IMMERSE YOURSELF IN A BRAND NEW CONCEPT OF SEA LIVING

Redesigned to bring the sea even closer, the cockpit features a newly enlarged opening section of the bulwark, which opens in a matter of seconds to become a surprising swim platform over the water with a fully integrated transom uniting all the available space. The transom is fully integrated with the new triple Mercury 600hp configuration, which delivers exceptional performance.







The spacious, convivial outdoor area features a multi-purpose unit fitted with a wet bar, 40” pop-up TV, fridge, icemaker, barbeque, hob and sink.

Could you ask for more?





# POWER, DESIGN AND COMFORT

The sporty and dynamic external lines of the Verve 48 conceal surprisingly spacious volumes while the ample open-air areas are designed with comfort and versatility in mind. Sit back and prepare to be enthralled and seduced by its timeless modernity as you experience the invigorating, empowering sense of knowing you are free to have whatever your heart desires, wherever and whenever you choose to go.







The modern, stylish helm station is based on a Plug&Play layout concept featuring clean, stark lines and a high-tech approach that uses LED lighting to stunning effect. The glass dashboard contains a trio of 16-inch Raymarine Axiom display screens that provide comprehensive navigational data together with a digital system that places control of all the various onboard functions at your fingertips.



Now, let us discover the guest accommodations.

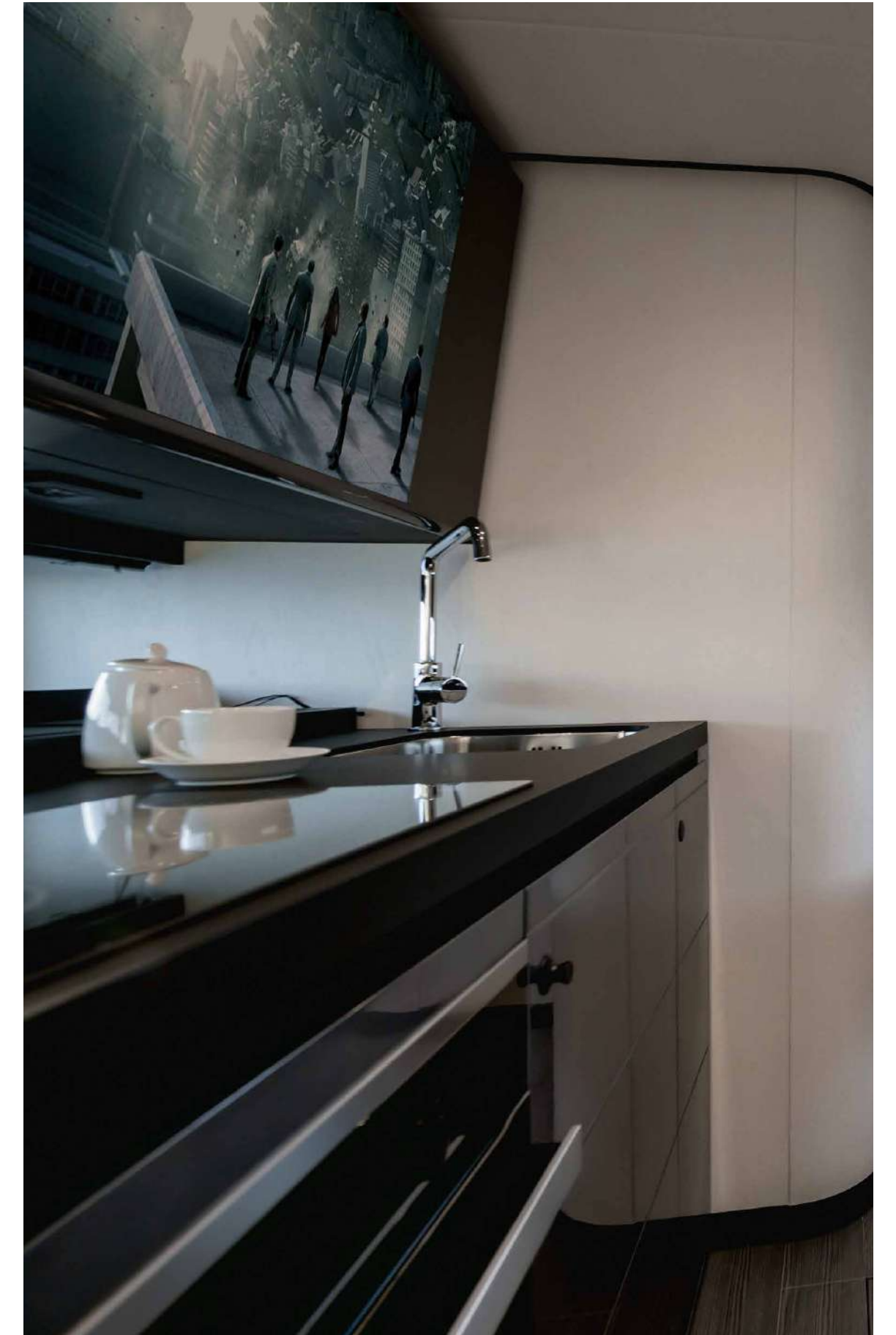
Shall we?













# MAKE YOURSELF AT HOME

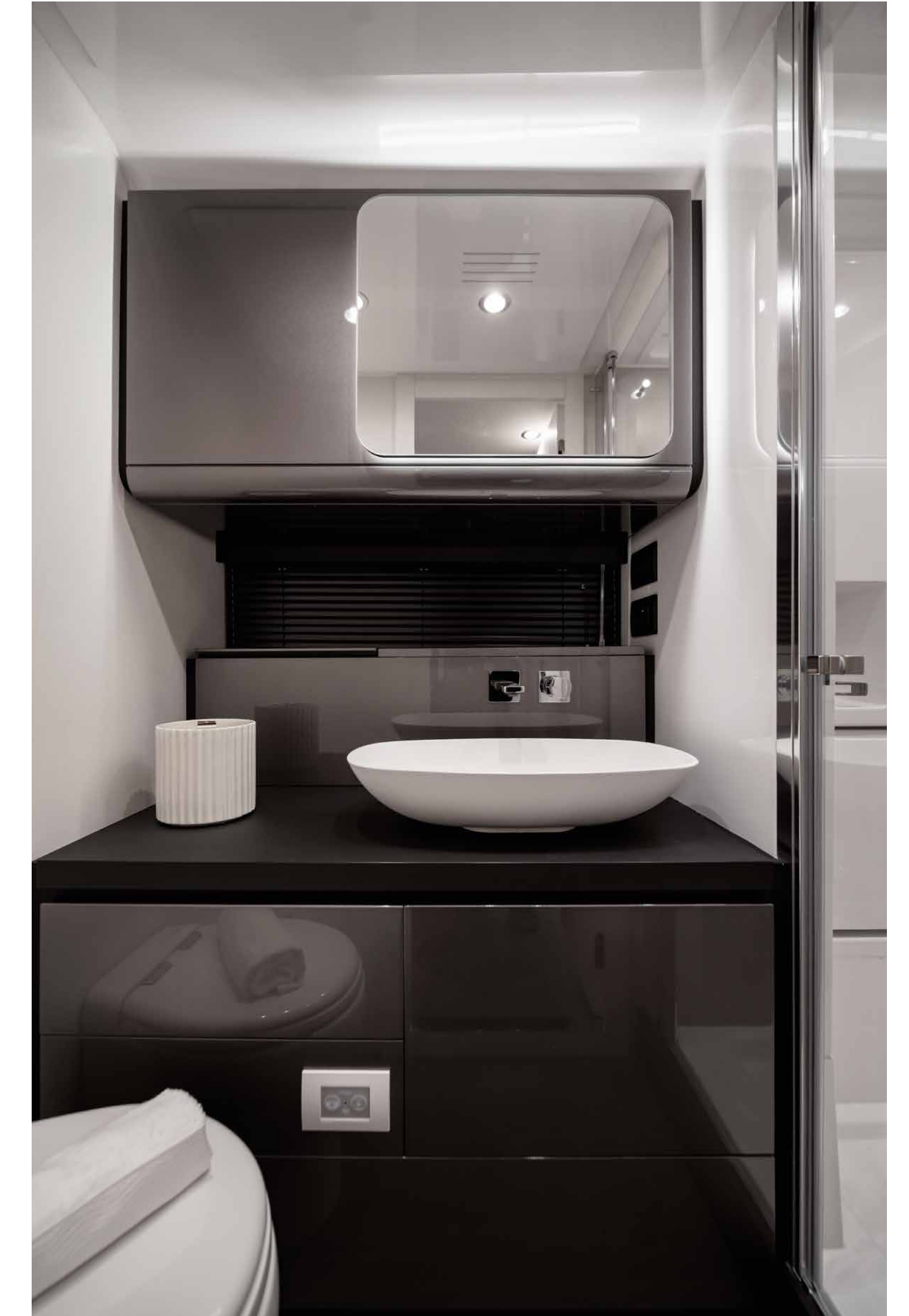
Sophisticated yet cozy and welcoming, the interiors are testimony to the meticulous attention to detail that has gone into creating the perfect combination of comfort, style and versatility. The dinette, located on the beam in the centre of the boat, can be transformed into a spacious relaxation zone with a large L-shape sofa and a high-low table that can be converted into a double bed.











The modern, stylish helm station is based on a Plug&Play layout concept featuring clean, stark lines and a high-tech approach that uses LED lighting to stunning effect. The glass dashboard contains a trio of 16-inch Raymarine Axiom display screens that provide comprehensive navigational data together with a digital system that places control of all the various onboard functions at your fingertips.





02

# HER MAIN TECHNICAL FEATURES



The beauty of the Verve 48 is not solely a matter of exterior and interior design elements that combine to perfectly play out Azimut's essence.

Her beauty is also about discovering the technological advancements and special components that contribute to making her truly unique and highly innovative.





# HIGH PERFORMANCE DOUBLE STEPPED HULL

The high-performance patented Stepped 'V' Ventilated Tunnel (SVT) was developed by Michael Peters and incorporates a classic deep 'V' hull with two transverse steps and a central tunnel aft. It is this latter feature that sets it apart from other current stepped deep 'V's, with its shallow aft central tunnel increasing the longitudinal stability of the boat in high speed turns and adverse situations.

The use of the SVT hull on the Verve 48 represents the merging of cutting-edge hull forms with advanced outboard engine power and avant-garde concept design and styling.

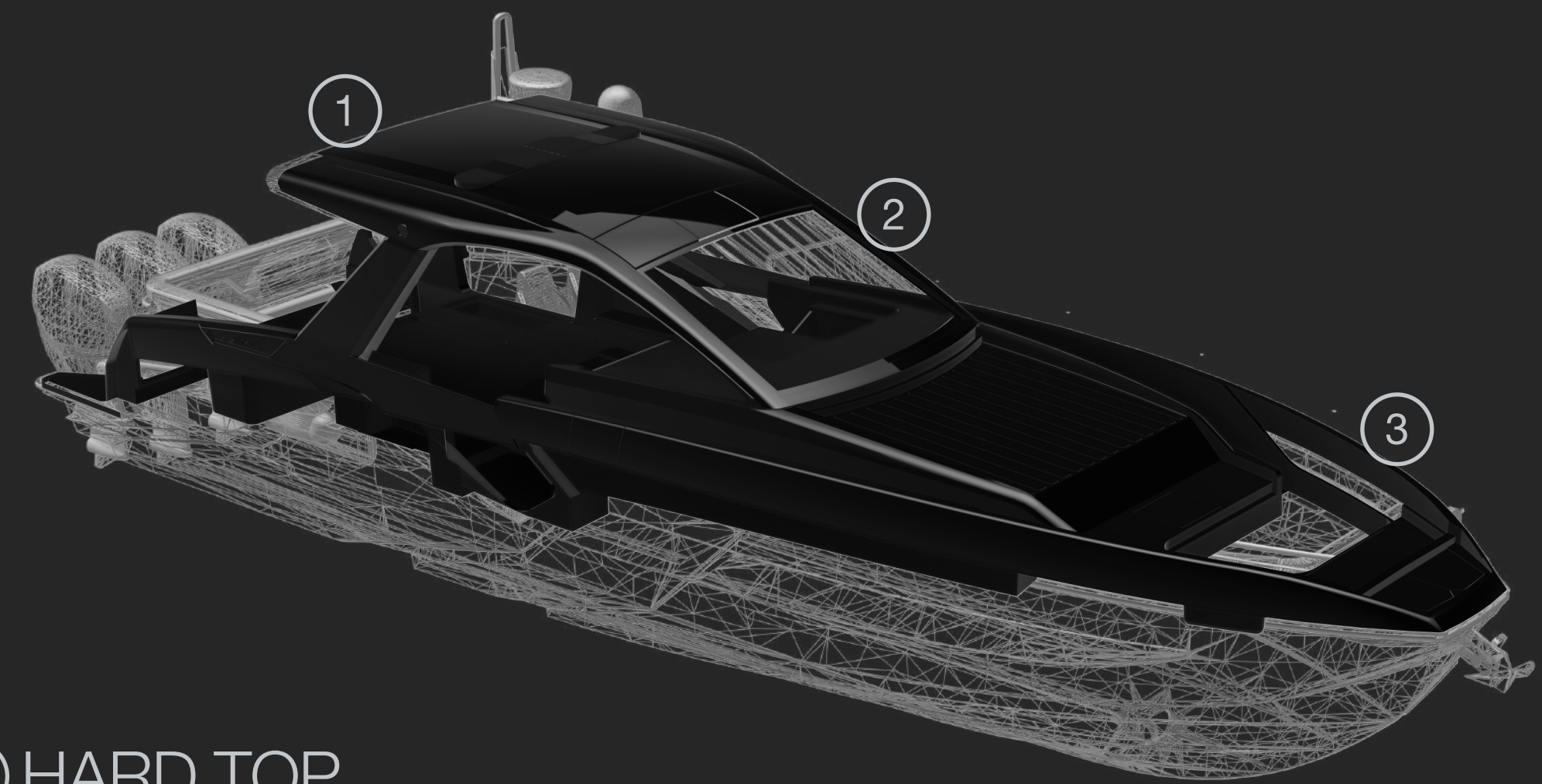
The combination of technologies culminates in a boat that boasts unmatched performance, manoeuvrability and speed in its class and represents the largest and grandest SVT pleasure boat available on the market.





# CARBON-TECH GENERATION

Azimut's pioneering use of carbon fiber lamination goes beyond pure performance. The Carbon Tech Generation offers expanded volumes on board, while maintaining excellent dynamic stability and perfect handling. Preserving the yacht's low center of gravity, the carbon fiber was focused on the upper parts of the yacht, lightening the laminated components by up to 30% and reducing the natural roll momentum up to 15%.



- ① HARD TOP
- ② SUPERSTRUCTURE
- ③ DECK

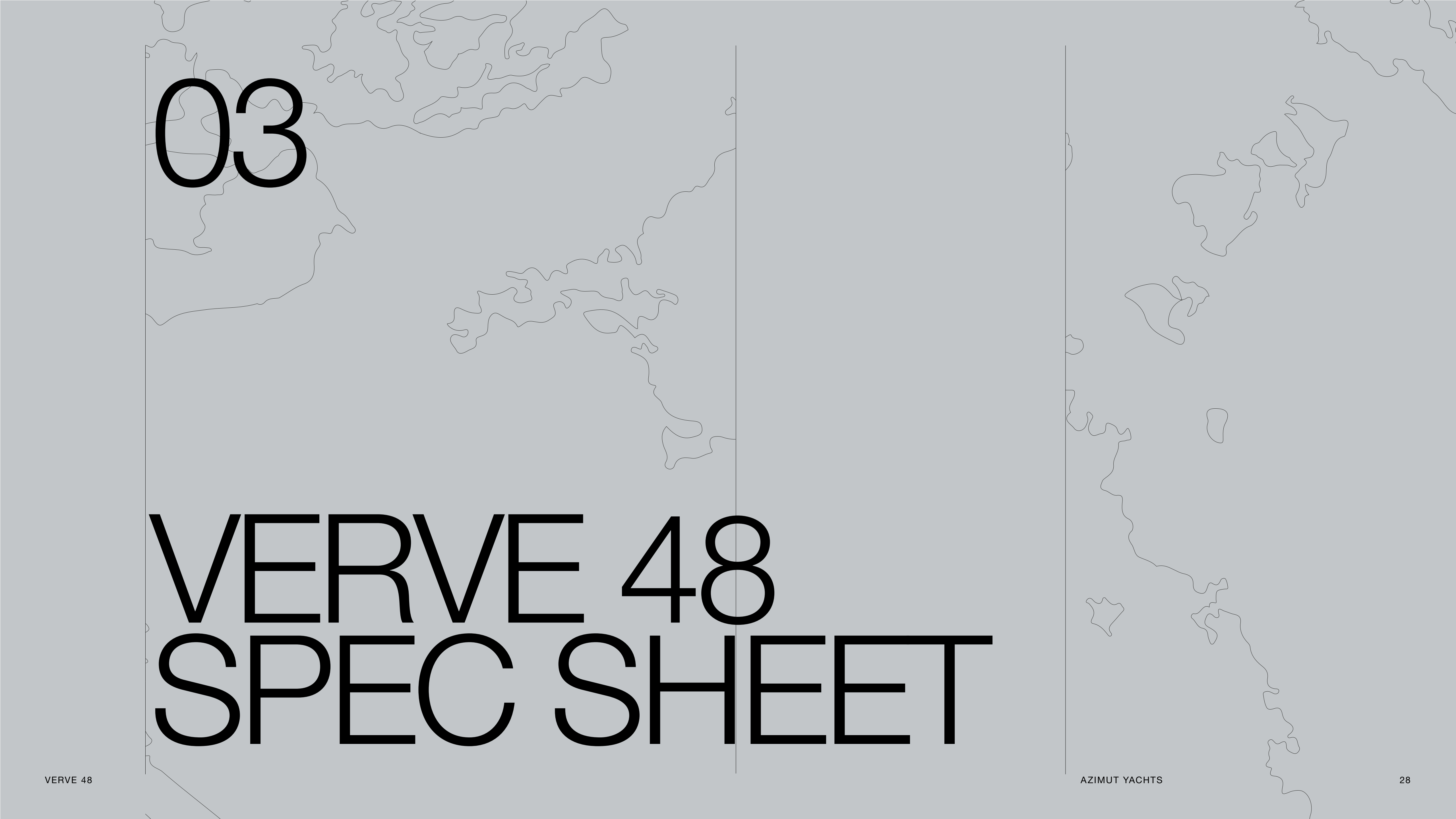


# INTEGRATED CONTROL AND MONITORING SYSTEM

The custom-installed Raymarine electronics have been integrated to control and monitor every onboard system: from engines and alarms, to bilge and water discharge pumps, tank levels and engine room ventilation, right through to the sound system and the air conditioning units. The system can be accessed onboard from both the interior and exterior helm stations and, with the mobile app, remotely from a tablet or smartphone.







03

# VERVE 48 SPEC SHEET



# GENERAL CHARACTERISTICS

LENGTH OVERALL	15,03 m	49' 4"
BEAM MAX	4,10 m	13' 5"
DRAFT	1.28 m	4' 3"
DISPLACEMENT	17,8 t	17518 lb
ENGINES	3 x 600 mHP (440kW) Verado Mercury	
MAXIMUM SPEED	Up to 50 kn	
CRUISING SPEED	37 kn	
KEEL	Stepped planing hull	
FUEL CAPACITY	2340 l	618 US Gls
WATER CAPACITY	300 l	79 US Gls
CABINS	2	
BERTHS	4	
HEAD COMPARTMENTS	1	
BUILDING MATERIAL	GRP + Carbon	
EXTERIOR DESIGNER	Francesco Struglia Design	
INTERIOR DESIGNER	Francesco Struglia Design	
HULL DESIGNER	Michael Peters	
BUILDER	Azimut Yachts	
CERTIFICATIONS	CE A; NMMA	

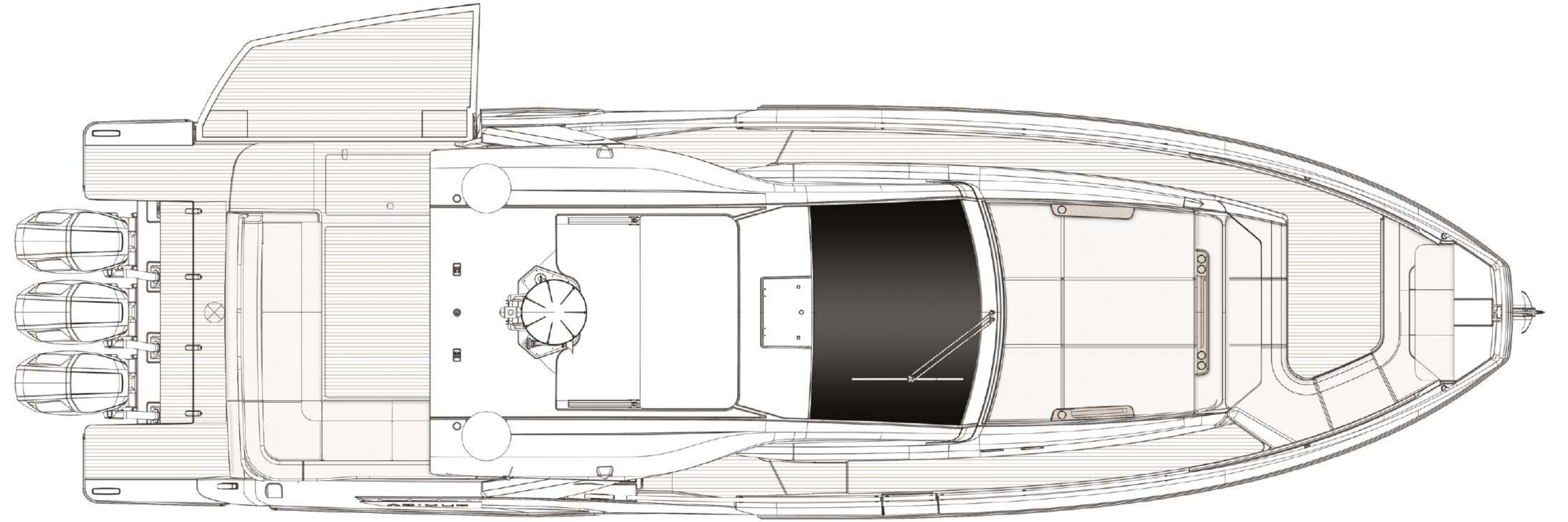
Last updated 02.2023  
Please consult your dealer for the latest specifications.

UNI ISO 8666  
The performance described applies to a vessel with standard configuration (standard equipment installed) and a clean hull, propellers, and rudder. It is also noted that the performance described was recorded under favourable sea and wind conditions (Beaufort scale index 1, Douglas scale index 1); different and worse sea conditions could significantly impact performance.

CE MARK  
Given the continual evolution of technology, Azimut | Benetti S.p.A reserves the right to modify the technical specifications on its vessels at any time and without prior notice.

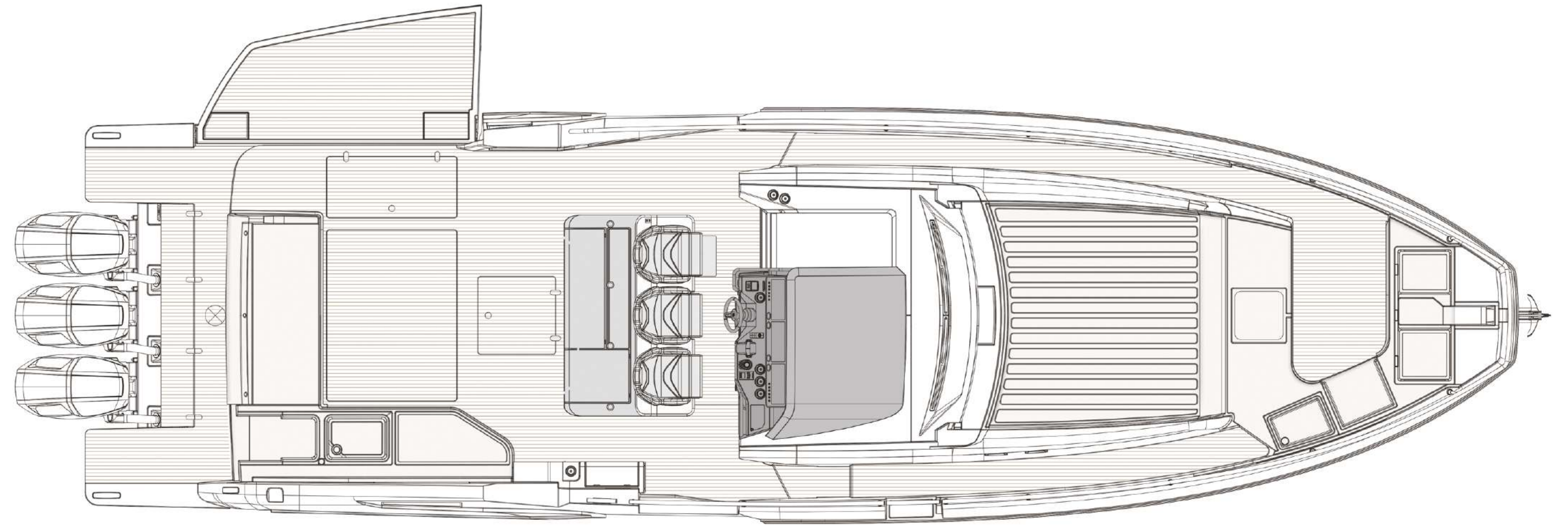


# ABOVE VIEW



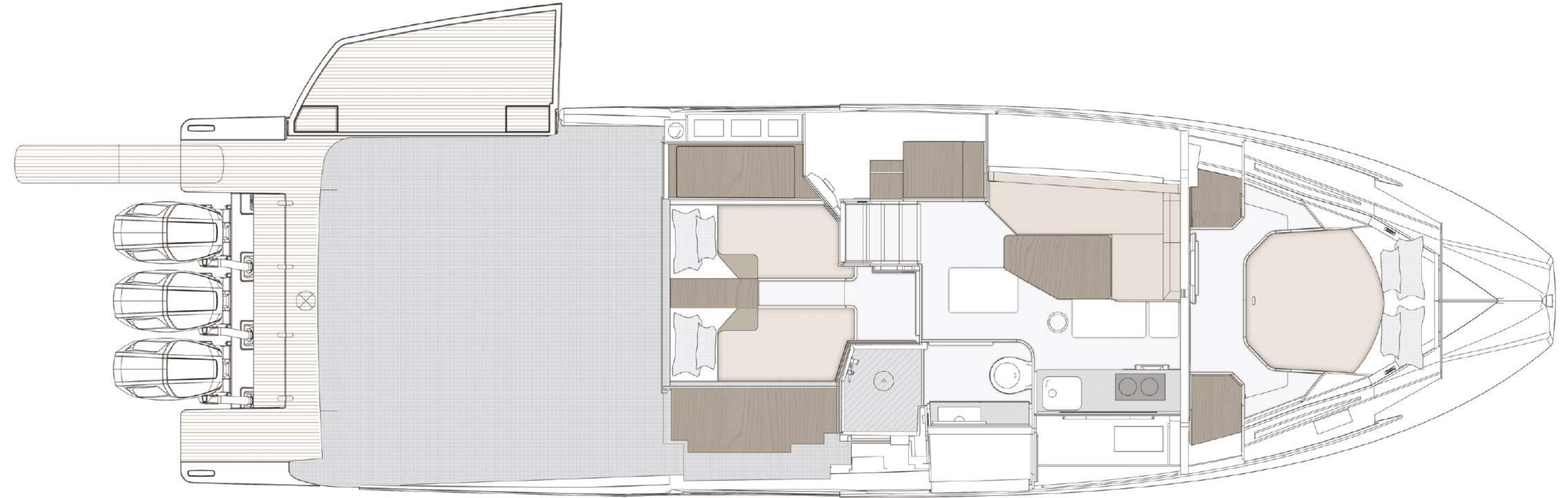


# MAIN DECK





# LOWER DECK







PRELIMINARY BROCHURE  
VERVE 48

RELEASE 03.23

This brochure in no way constitutes a contract of sale for the boatyard's vessels to any person or company. All information contained herein, including but not limited to technical and performance data, illustrations, and drawings, is non-binding and for purposes of illustration only. The information in this brochure refers to the boatyard's standard motoryacht models available as of the date of publication. Technical and descriptive information is valid only to the extent that it pertains to the specific vessel that is the subject of a purchase. Contract terms are valid only to the extent that they are contained in a contract of sale. This document is based on information available at the time of publication. Despite efforts to ensure the greatest possible accuracy, the information contained herein may fail to cover all details, omit technical or commercial changes that may have been made subsequent to publication, describe features that are not present, and fail to envisage all circumstances that might occur. Any illustrations, photographs, diagrams and examples shown in this brochure are included solely for the purposes of illustrating the text. Due to the different features of each vessel, the boatyard assumes no liability for actual use based on the illustrated applications.



AZIMUT

[azimutyachts.com](http://azimutyachts.com)

