

AZIMUT

S

7

NEW S7

PRELIMINARY BROCHURE



INDEX

01	THE DESIGN & LIFESTYLE ON BOARD	P04
02	S7 SPEC SHEET	P29



A one-of-a-kind beauty, enrapturing,
that steals your breath away, leaving you
speechless. An extraordinary idea as the only
possible pathway, to get to where you want,
to explore, to go beyond.

The freedom of embracing the unknown, that
you know you'll love as a part of your very own
story. A thought that provokes your mind and
then inspires you to aim for the impossible,
making mistakes, yet being brave.

A magic je ne sais quoi that enchants and
intrigues you, moving you to feel more and to
sense uniqueness.

The choice to risk it all, the one that makes you
go for it, to impress yourself and all those who
are worth it.

Welcome to Azimut.

AZIMUT.
DARE TO AMAZE.



01

THE DESIGN & LIFESTYLE ON BOARD



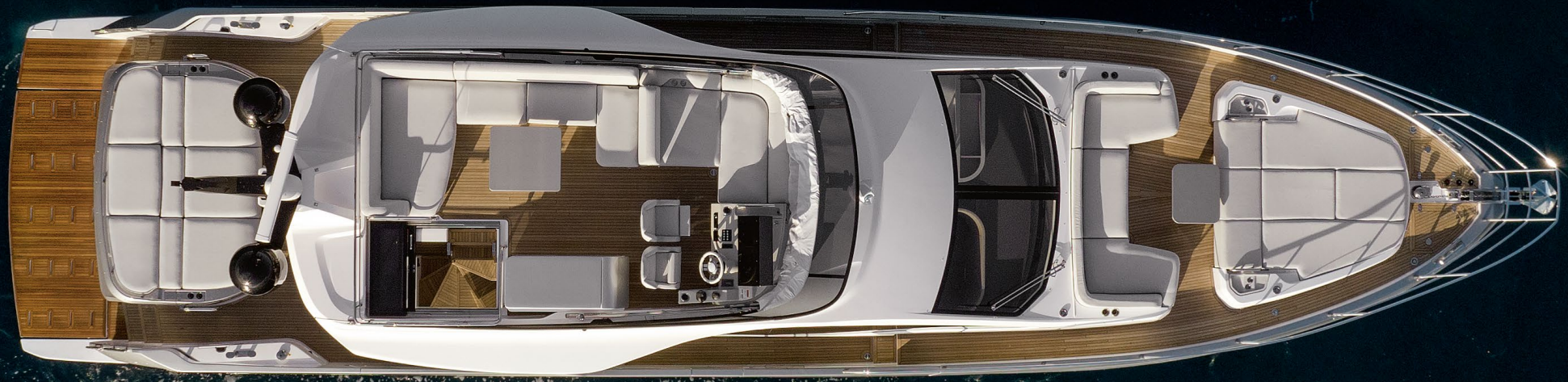




Welcome aboard, ladies and gentlemen.

Let us begin the tour.





AT ONE WITH SEA AND SKY























Now, let us discover the guest accommodations.

Shall we?



















02

S7
SPEC SHEET

GENERAL CHARACTERISTICS

LENGTH OVERALL	21,68 m	71' 2"
BEAM MAX	5,15 m	16' 1"
DRAFT	1,69	5' 7"
DISPLACEMENT	46 t	101412 lb
ENGINES	3 x Volvo PENTA D13 IPS1050 800 hp	
MAXIMUM SPEED	up to 35 kn	
CRUISING SPEED	up to 27 kn	
KEEL	V-shape with deadrise 13,8° aft	
FUEL CAPACITY	3800 l	1004 US Gal
WATER CAPACITY	1000 l	264 US Gal
CABINS	4 + 1 crew	
BERTHS	8 + 2 crew	
HEAD COMPARTMENTS	3 + 1 crew	
BUILDING MATERIAL	Carbon fibre + GRP	
EXTERIOR DESIGNER	Alberto Mancini	
INTERIOR DESIGNER	Yachtique	
BUILDER	Azimut Yachts	
HULL DESIGNER	P.L. AUSONIO Naval Architecture & Azimut R&D Dept.	
CERTIFICATIONS	CE A; NMMA	

Last updated 01.2023
Please consult your dealer for the latest specifications.

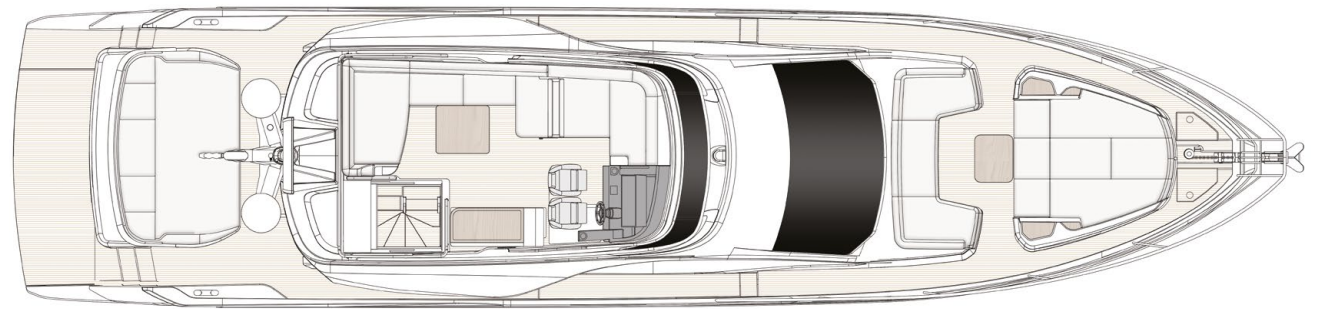
UNI ISO 8666

The performance described applies to a vessel with standard configuration (standard equipment installed) and a clean hull, propellers, and rudder. It is also noted that the performance described was recorded under favourable sea and wind conditions (Beaufort scale index 1, Douglas scale index 1); different and worse sea conditions could significantly impact performance.

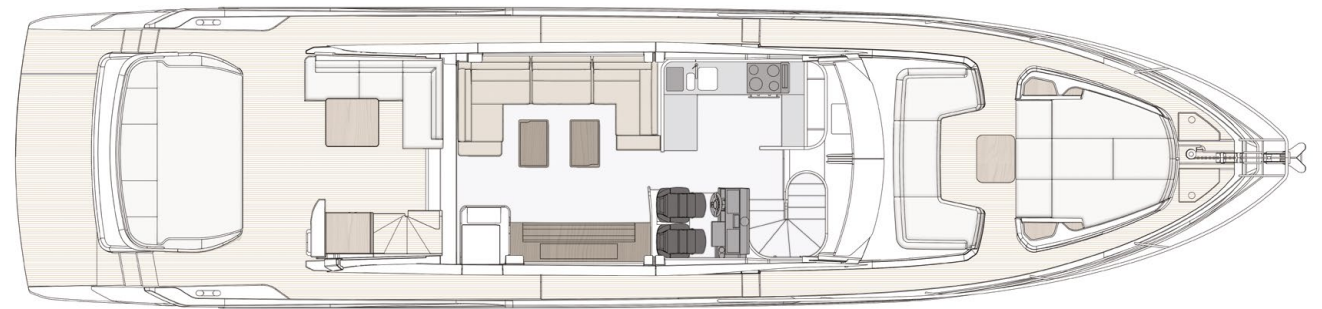
CE MARK

Given the continual evolution of technology, Azimut | Benetti S.p.A reserves the right to modify the technical specifications on its vessels at any time and without prior notice.

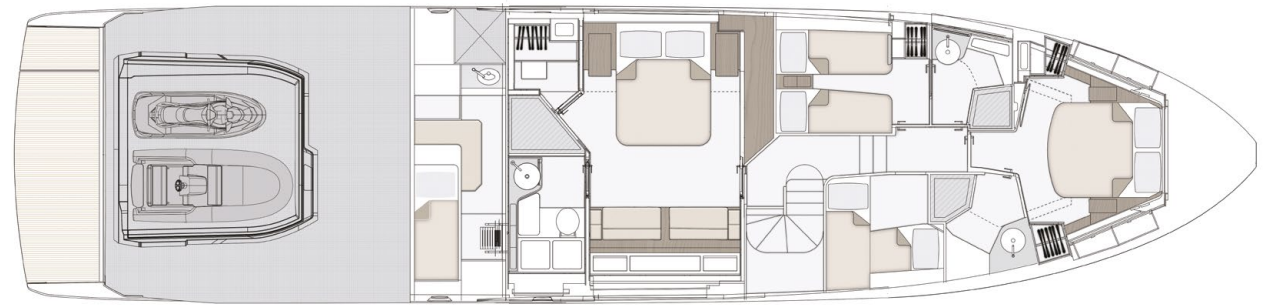
FLYBRIDGE



MAIN DECK



LOWER DECK





PRELIMINARY BROCHURE
S7

RELEASE 01.23

This brochure in no way constitutes a contract of sale for the boatyard's vessels to any person or company. All information contained herein, including but not limited to technical and performance data, illustrations, and drawings, is non-binding and for purposes of illustration only. The information in this brochure refers to the boatyard's standard motoryacht models available as of the date of publication. Technical and descriptive information is valid only to the extent that it pertains to the specific vessel that is the subject of a purchase. Contract terms are valid only to the extent that they are contained in a contract of sale. This document is based on information available at the time of publication. Despite efforts to ensure the greatest possible accuracy, the information contained herein may fail to cover all details, omit technical or commercial changes that may have been made subsequent to publication, describe features that are not present, and fail to envisage all circumstances that might occur. Any illustrations, photographs, diagrams and examples shown in this brochure are included solely for the purposes of illustrating the text. Due to the different features of each vessel, the boatyard assumes no liability for actual use based on the illustrated applications.

^ZIMUT

azimutyachts.com

